



## PRESS RELEASE

**Date:** September 8, 2015  
**Contact:** Eliza Echevarria, Public Affairs Manager  
(951) 787-4018 – Office or (951) 235-9564 – Mobile

*FOR IMMEDIATE RELEASE*

### **Southbound 71 to Eastbound 91 Connector Full Weekend Closure**

As part of the Riverside County Transportation Commission's 91 Project, a weekend full closure of the southbound 71 to eastbound 91 connector in Corona will be required. The closure will occur from 9 pm on Friday, September 11 through 4 am on Monday, September 14.

The closure will allow crews to widen and repave the connector between the 71 and 91. As a detour, motorists traveling south on the 71 may use westbound 91, exit at Green River Road, and enter eastbound 91 from Green River Road. (Detour map on next page).

Throughout the closure, motorists are reminded to allow extra travel time and follow detour signs.

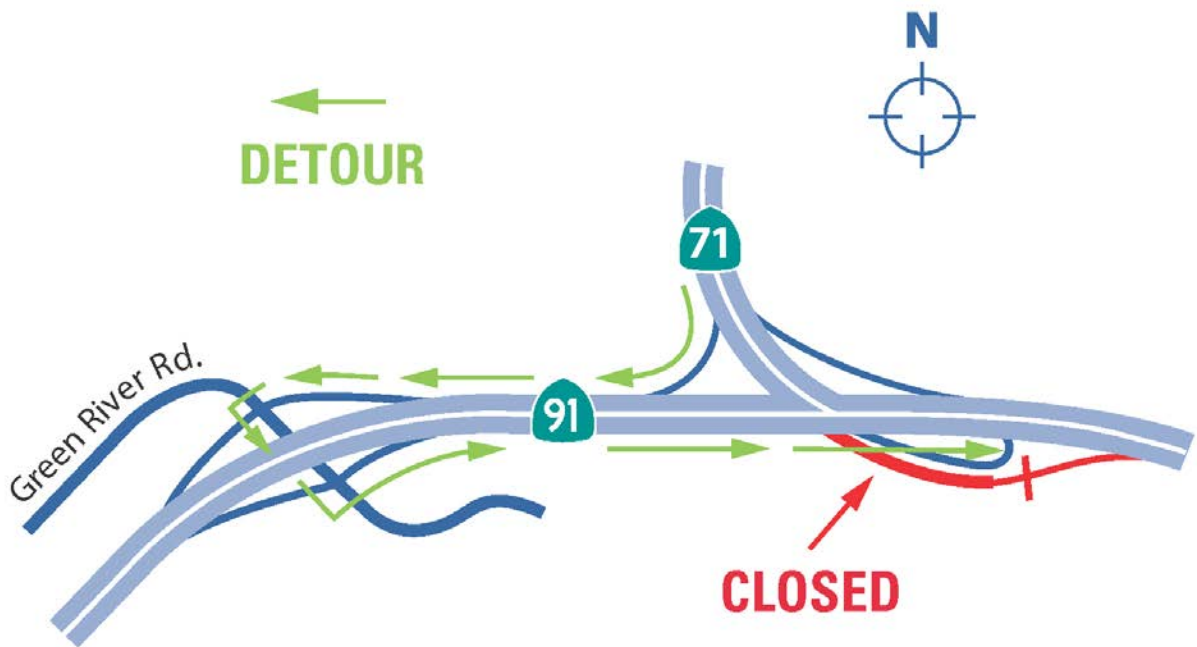
For questions or more information, please use the "Contact Us/Feedback" page at [sr91project.info](http://sr91project.info) or call the helpline, 877-770-9191. In addition, frequent project updates are posted on Facebook/[sr91project](https://www.facebook.com/sr91project) and Twitter [@sr91project](https://twitter.com/sr91project).

The 91 Project is adding regular lanes, tolled express lanes, auxiliary lanes and direct express lane connectors from the northbound 15 to the westbound 91 and from the eastbound 91 to the southbound 15. Improvements to interchanges, ramps, lanes and surface streets also will be made along the 91 between the Riverside County/Orange County Line in Corona and Pierce Street in Riverside. The new lanes are expected to open in 2017.

- MORE -

## 91 PROJECT DETOUR

### Southbound 71 to Eastbound 91



###