



91 PROJECT UPDATE

Riverside County Transportation Commission

Eliza Echevarria, Community Relations Manager

Residents Association of Greater Lake Mathews

October 16, 2013



Riverside County Transportation Commission



We Hear You...

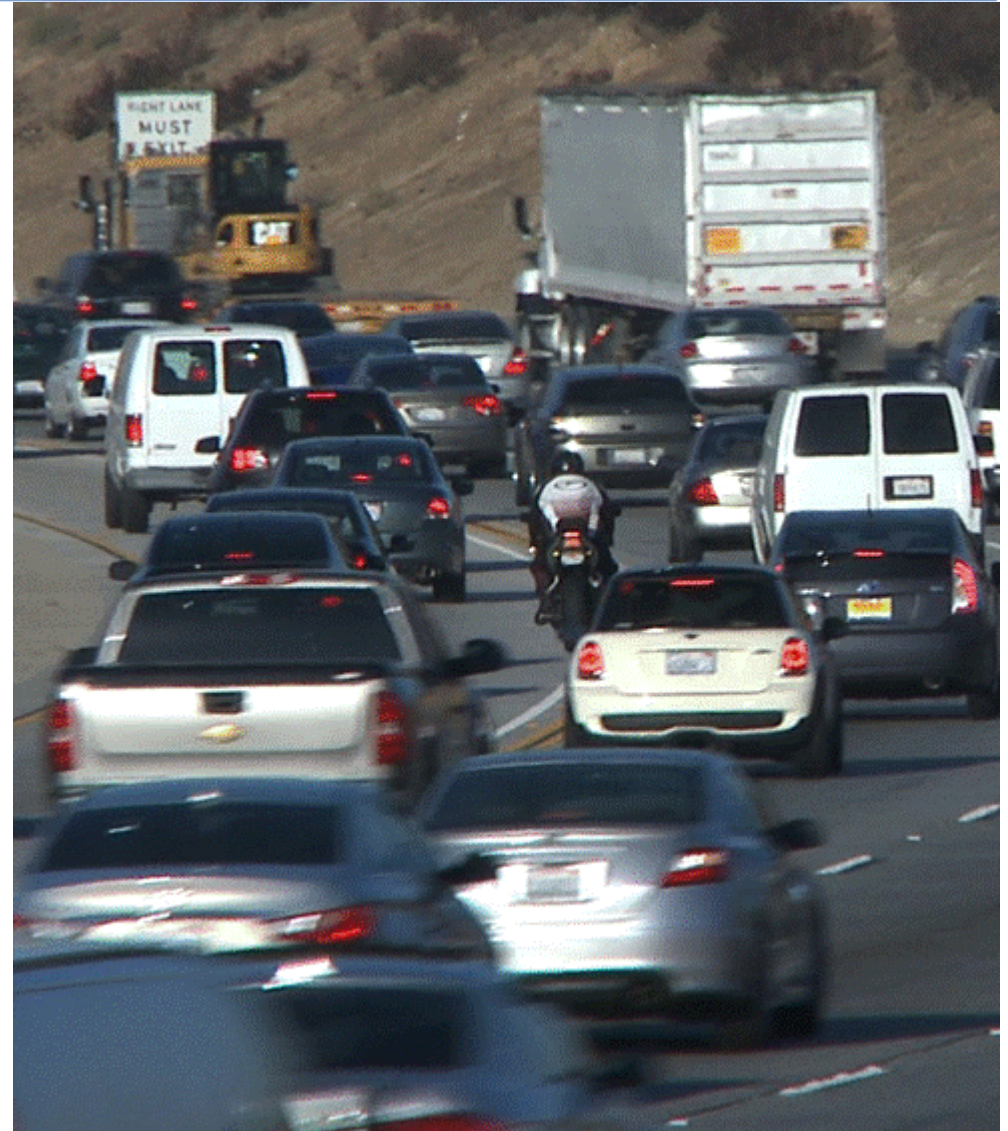




Project Need



- 91 is primary east-west route
- 280,000 vehicles daily, 140,000 more by 2035
- Afternoon eastbound delays in top 5 in nation – speeds drop below 15 MPH

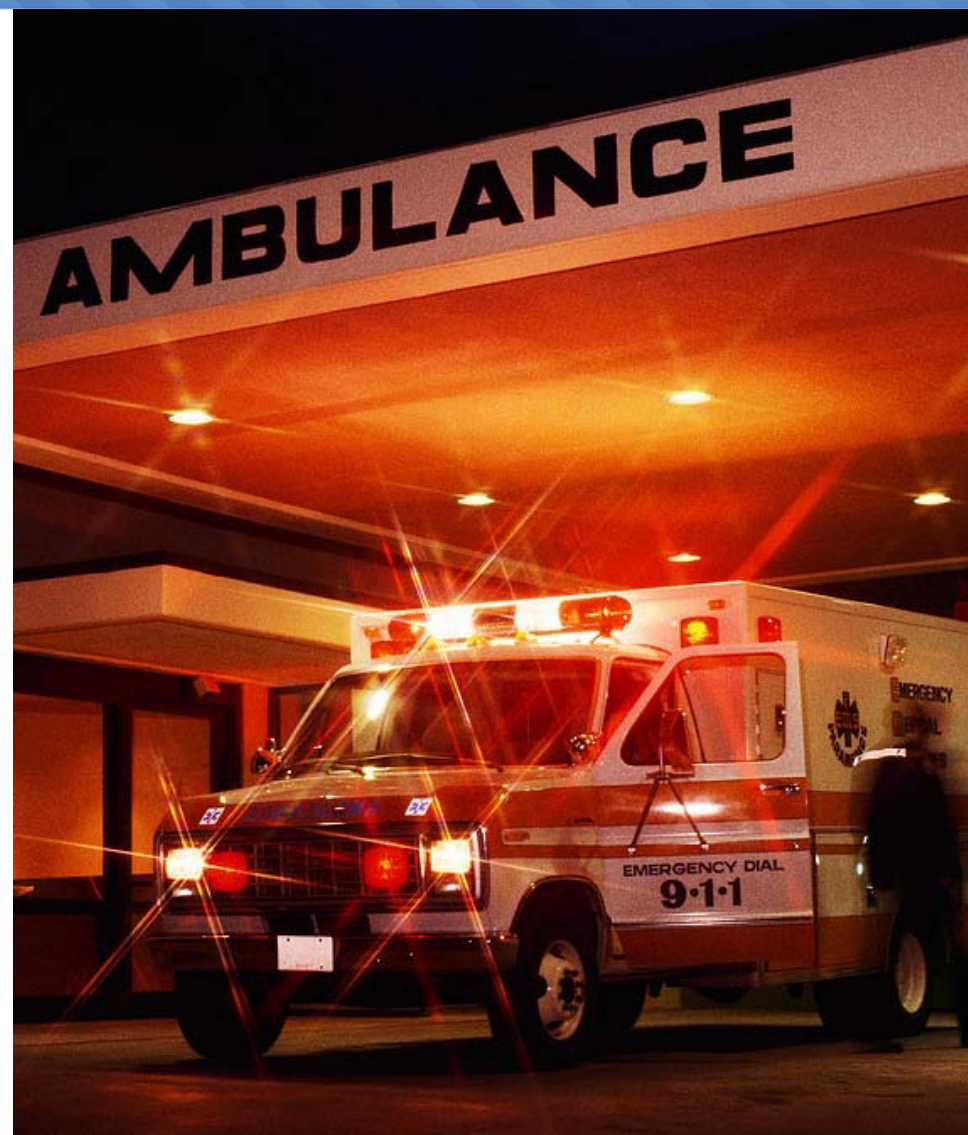




Project Benefits

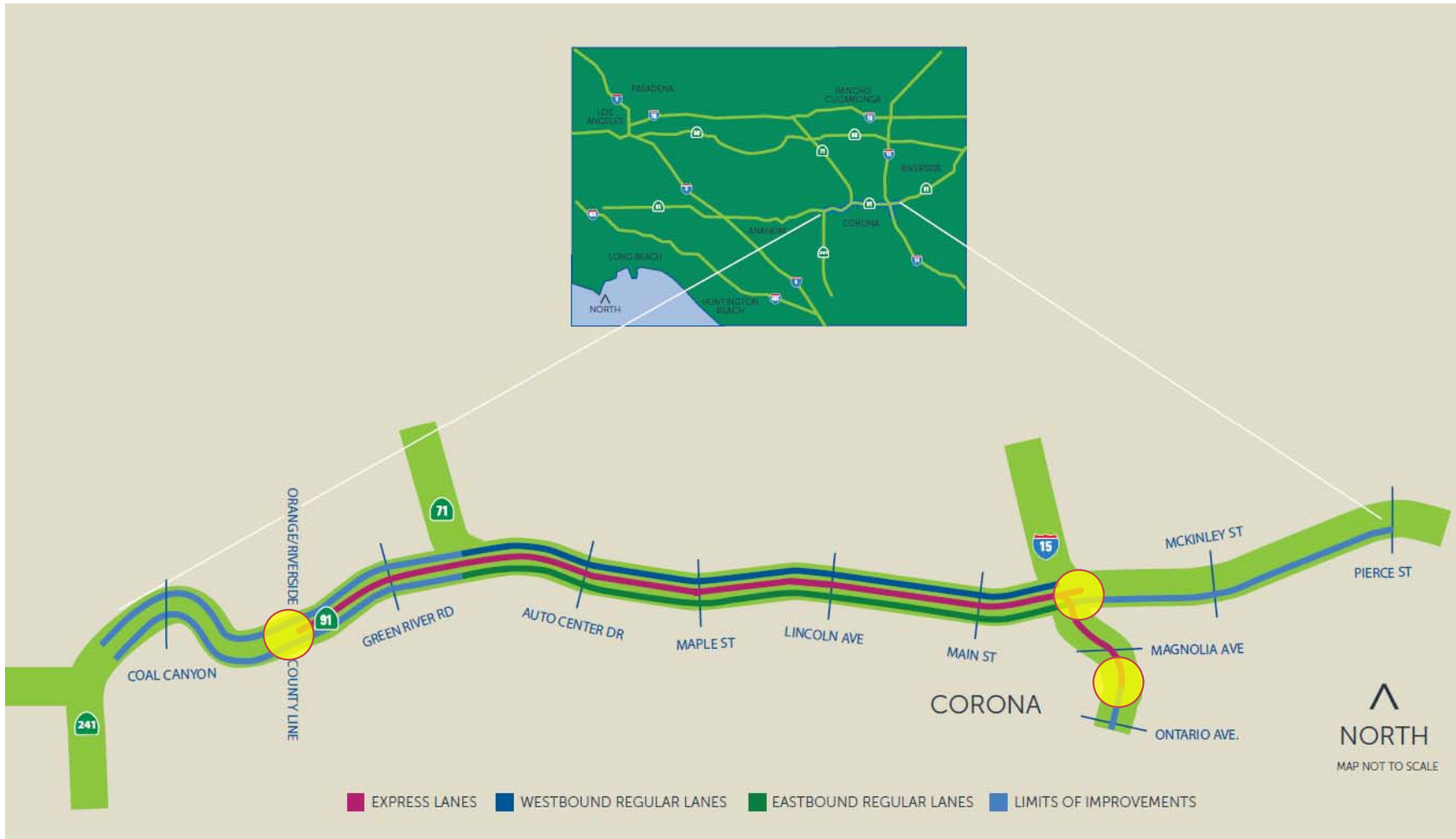


- Fewer traffic delays
- Faster emergency response
- Enhanced infrastructure
- Reduced air pollution
- 16,200 jobs (4,600 for construction/support)



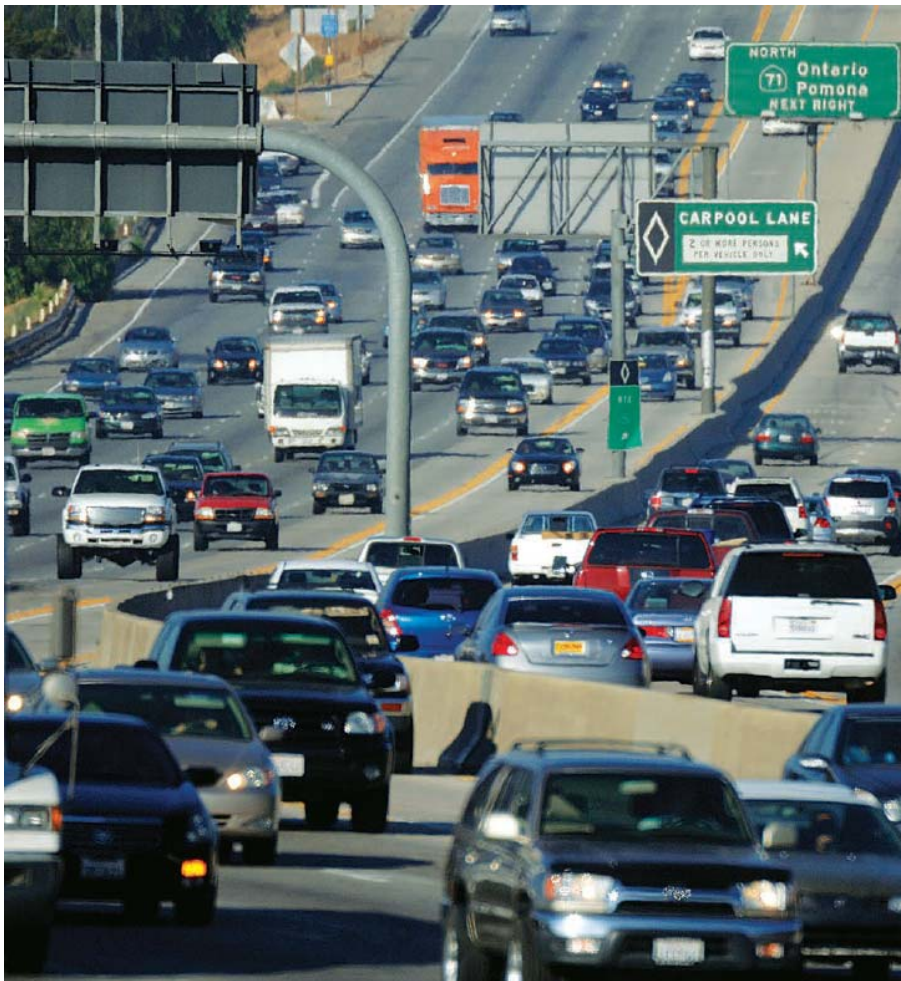


Lanes, Tolling Access





Fast Forward



- Environmental process completed, Nov. 2012
- Design-build contract awarded May 2013
- Funding secured, July 2013 -- \$1.3 billion project
- Construction to begin, early **2014**
- Lanes to open, **2017**



Express Lanes



- Extend nationally proven 91 OC Express Lanes
- 64% of transponder owners live in IE
- Choice: speed, reliability
- Replace carpool lanes; carpoolers with 3+ and transponder ride free 94% of time
- Revenue reinvested in 91 corridor





Design-Build Method



- Innovative: Allows concurrent design, construction, improved coordination
- Will save 3-4 years over design-bid-build method



- Shorter construction = Fewer impacts, lower cost
- Contract awarded to Atkinson-Walsh Joint Venture
- AWJV seeking small, disadvantaged businesses



Stay Connected



www.sr91project.info



Helpline: 1-877-770-9191



Follow us on Twitter: twitter.com/RCTC



Real-time traffic updates, ie511.org