



91 PROJECT UPDATE

Riverside County Transportation Commission

David Thomas, Toll Project Manager

Four Corners Policy Committee

Southern California Association of Governments

May 20, 2013

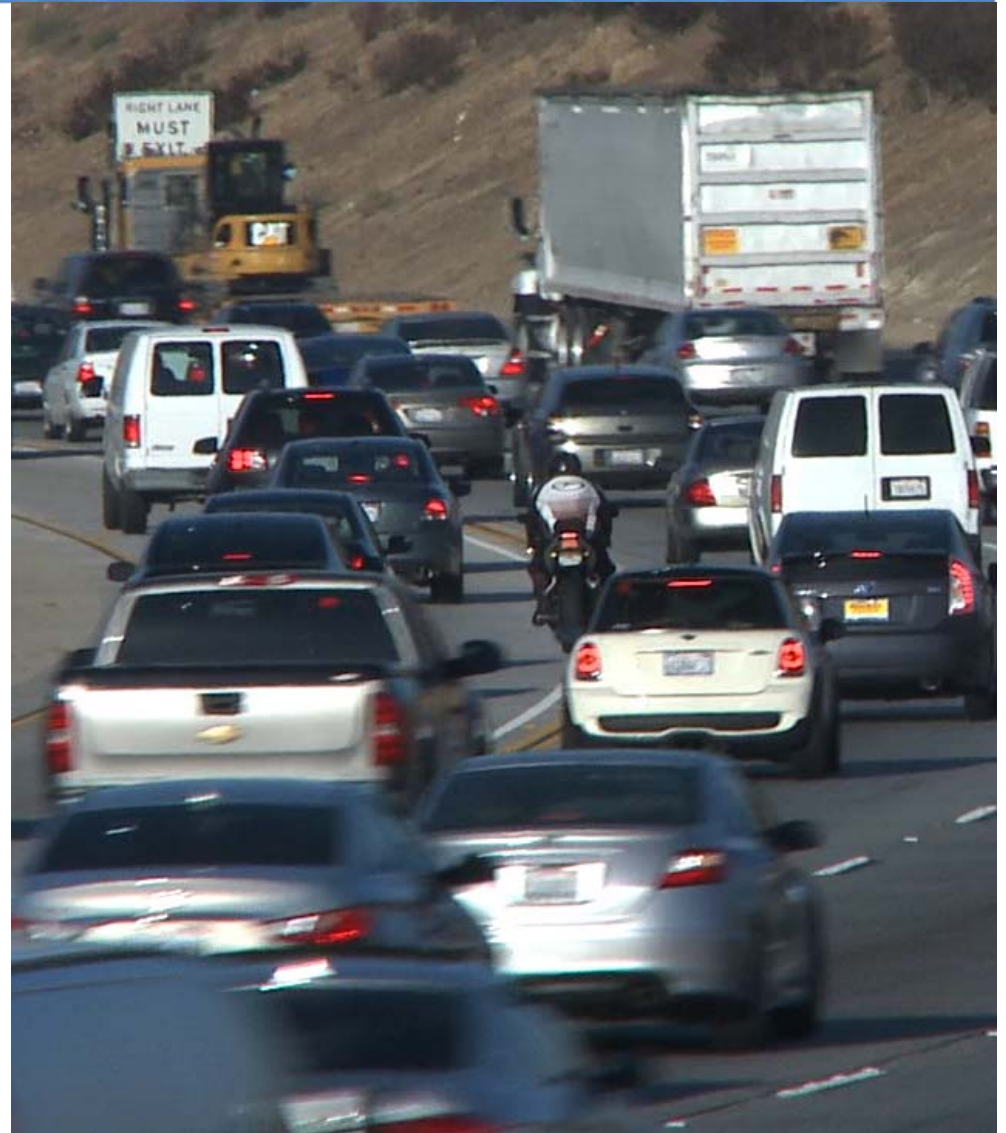




Project Need

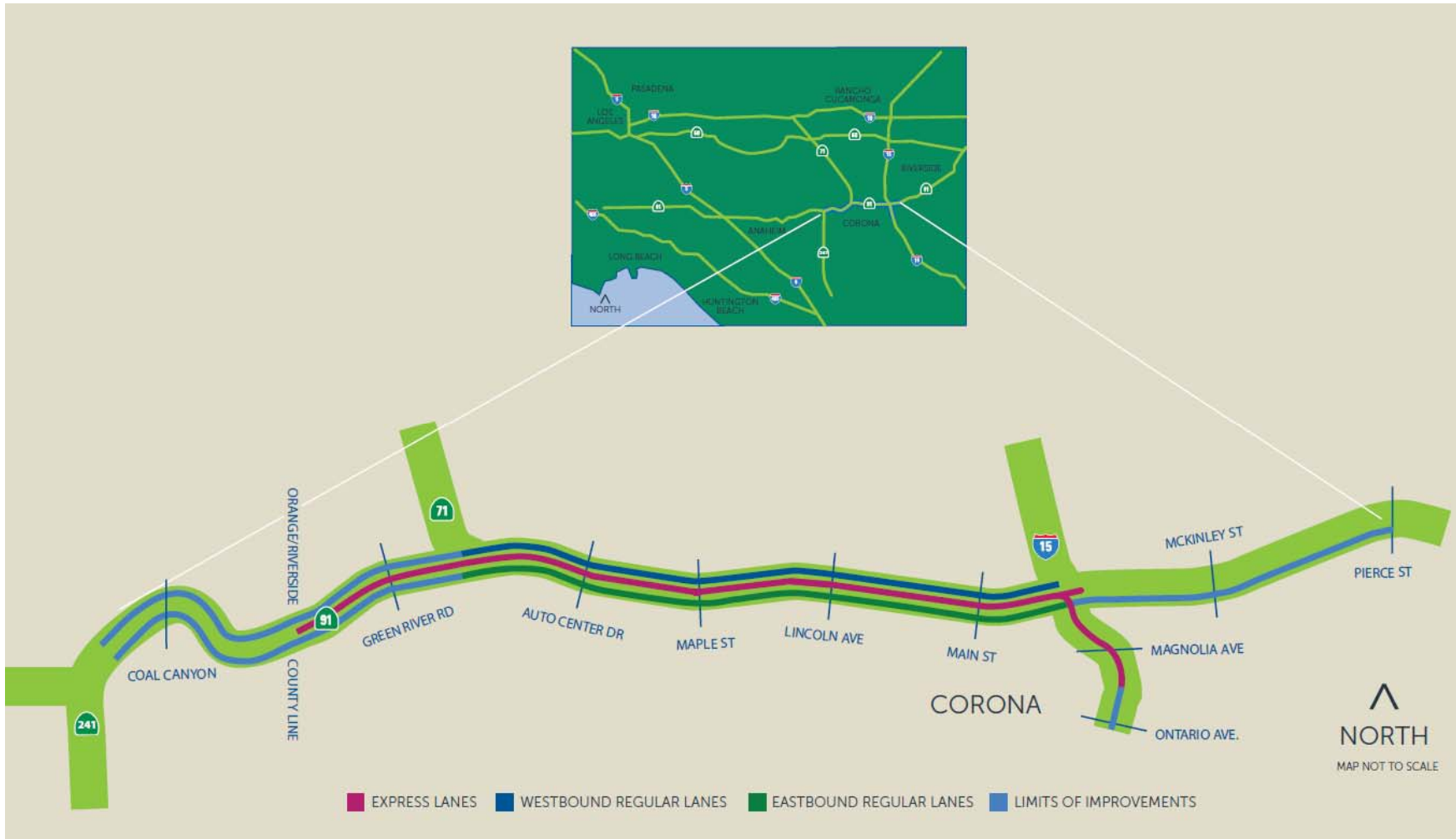


- 91 is primary east-west route
- 280,000 vehicles daily, 140,000 more by 2035
- Afternoon eastbound delays in top five of nation – speeds drop below 15 MPH



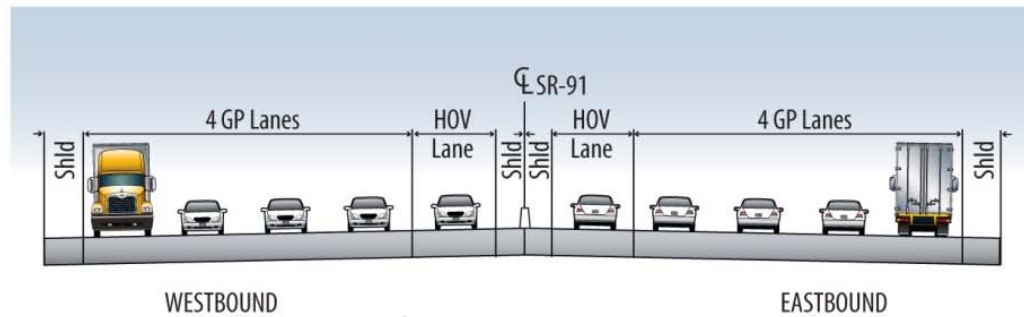


Project Limits

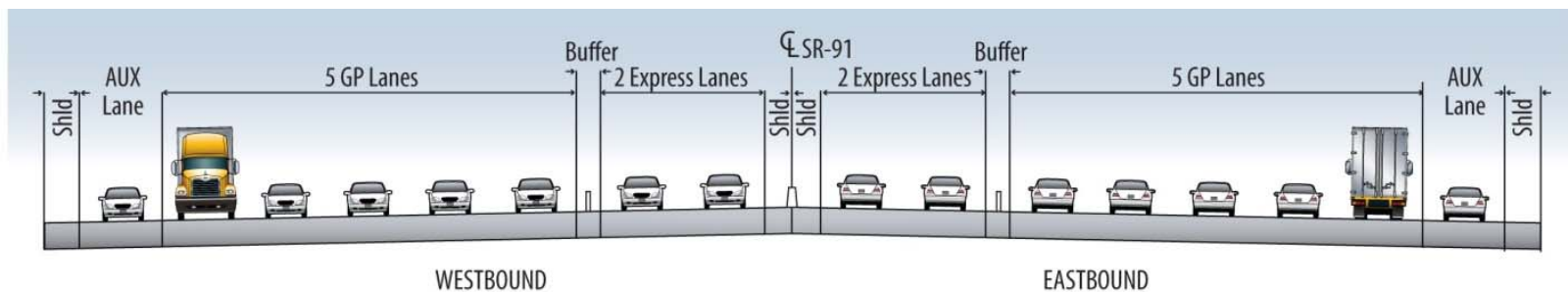




New Lanes



Current



Future



Project Benefits



- Fewer traffic delays
- Faster emergency response
- Less local street congestion
- Reduced air pollution





Project Benefits



- 16,200 jobs (4,600 for construction/support)
- Economic boost from new workers
- Local investment – improved infrastructure
- Improvements to Green River, Auto Center, Maple, Lincoln, Main Street, I-15



Transit/Trail Connections

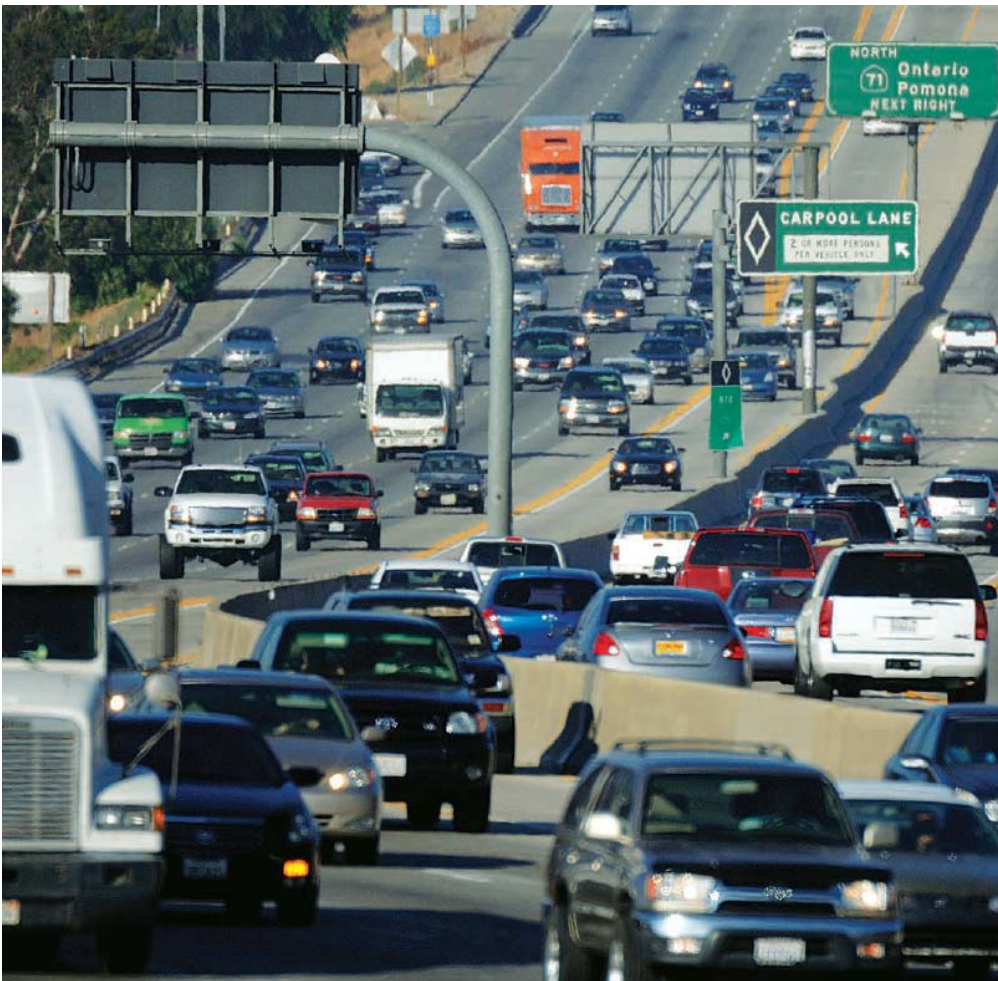


- Metrolink passenger rail
- Park & Ride network
- RTA-OCTA express buses
- Santa Ana River Trail





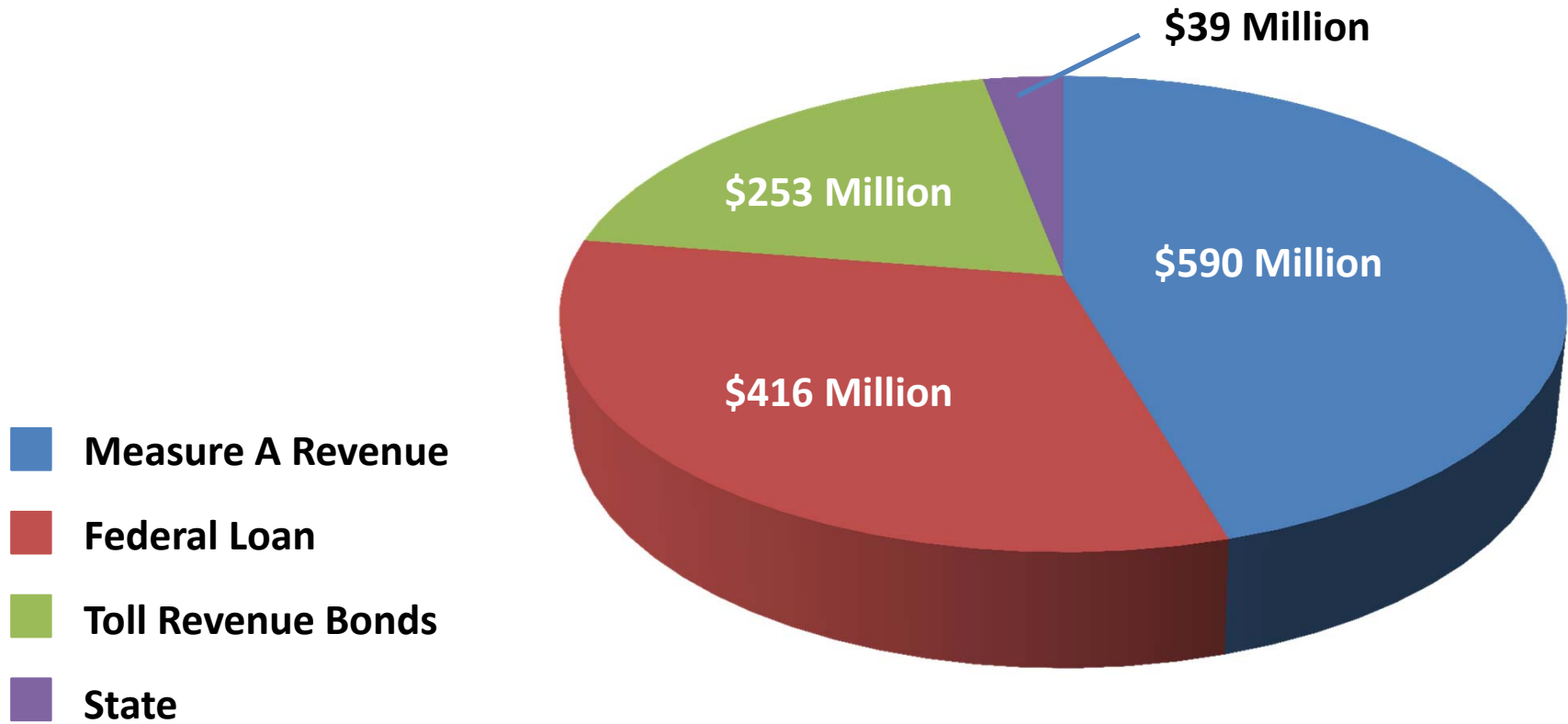
Fast Forward



- Environmental process completed
- Design-build contract awarded May 8 to Atkinson/Walsh – \$632 million contract
- Funding package to be complete in June: \$1.3 billion project



Funding Sources



Federal Loan and Toll Revenue Bonds to be Repaid from Tolloed Express Lane Revenue



Express Lanes



- Extend nationally proven 91 Express Lanes from Orange County
- Have cooperative agreement with OCTA; seamless operation between counties; consistent policies
- RCTC to own/operate lanes in Riv County

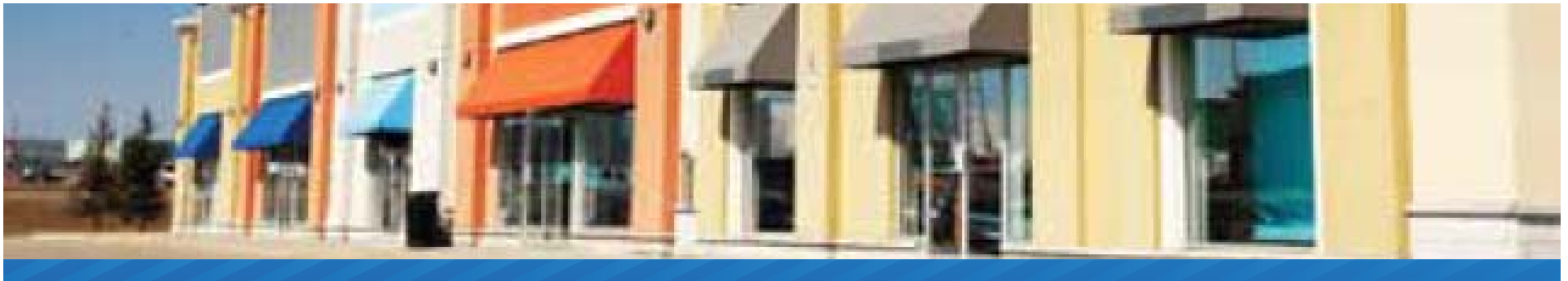




Property Purchases



- Sensitive to community impacts
- Purchase only what's needed – 75 full properties, 125 partial properties, 67 property easements
- Half commercial, half residential purchases
- Lease back properties not immediately needed
- Relocation of residents, businesses as needed





Design-Build Delivery



- Innovative: Allows concurrent design, construction
- Will save 3-4 years over design-bid-build



- Shorter construction = Fewer impacts, lower cost
- Early construction activities in 2013
- Construction planned to start in 2014; new lanes planned to open 2017



91/71 Interchange



- Connector from eastbound 91 to northbound 71 to be realigned
- Connector from southbound 71 to eastbound 91 to be widened



Stay Connected



www.sr91project.info



Helpline: 1-877-770-9191



Follow us on Twitter: twitter.com/RCTC



Real-time traffic updates, ie511.org