



# FAST FORWARD

RIVERSIDE COUNTY TRANSPORTATION COMMISSION

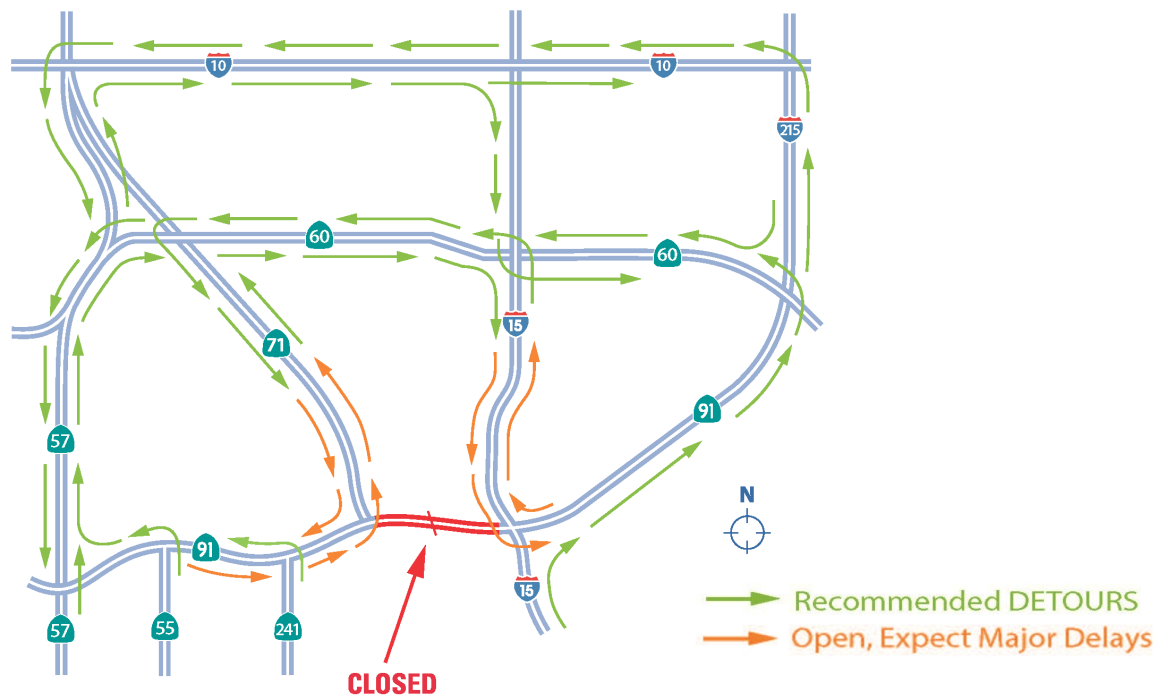
## 91 Project #91steerclear

As part of the 91 Project, the Riverside County Transportation Commission (RCTC) will conduct a full weekend closure of both the eastbound and westbound 91 between the 71 and I-15 in Corona. The 55-hour closure will be from **Friday, February 19, 2016 at 9 pm to Monday, February 22, 2016 at 4 am.**

Because of the impact that a full closure will have on this heavily traveled roadway, the 91 Project team is urging motorists to “steer clear” of the area during this closure. To minimize major travel delays and impacts during the closure, RCTC strongly recommends that motorists plan ahead, avoid travel in the area or stay home. Motorists traveling on the 91, the 71 or I-15 near the project area during the closure period can expect travel delays of three to four hours. If travel cannot be avoided, motorists can use the 57, 60 and I-10 as alternate routes.

In case of heavy rainstorms or inclement weather, the closure will be postponed to the next weekend, weather permitting. To verify closure dates, please see the “91 Steer Clear” section of the 91 Project website, [sr91project.info](http://sr91project.info). Updates also will be posted to Facebook and Twitter.

## Alternate Routes “91 Steer Clear” Weekend Full Closure



**Project Helpline:** 877-770-9191  
**Website:** [sr91project.info](http://sr91project.info)  
**Email:** [sr91project@rctc.org](mailto:sr91project@rctc.org)



@sr91project



/sr91project